

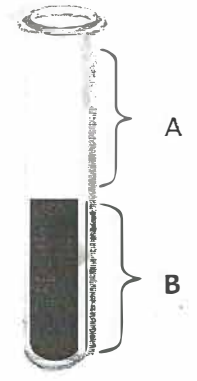
**Homework 2.10 25**

35 points

**MAKE-UP OF BLOOD**

**Part 1: Examine the diagram of blood at the right that has been setting for an hour. Write the letter of the blood part being described in each of the words or phrases below. Write the correct letter next to each word or phrase. A or B. (10 points)**

- |                          |  |
|--------------------------|--|
| a. Plasma _____          | f. Includes blood clotting chemicals _____ |
| b. Liquid part _____     | g. Includes food, salts, & wastes _____    |
| c. Blood cell part _____ | h. Red _____                               |
| d. Nonliving part _____  | i. Yellow _____                            |
| e. Living part _____     | j. Mostly water _____                      |



**PART 2: Read the paragraph below about donating blood. Then fill in the diagram with the terms listed to give the order in which information is presented in the paragraph. (5 points)**

Many people donate their blood. In giving blood, only about 400 mL of blood are taken from a person. The actual donation takes about ten minutes. People who give blood must be between the ages of 17 and 65. Also, people who give blood can donate only once every eight weeks.

- 17 though 65
- donating blood
- about 10 minutes
- about 400 mL
- every 8 weeks

1.
2.
3.
4.
5.

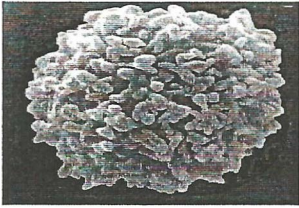
**BACK**  
→

# BLOOD CELLS AND PLATELETS

This is not a Multiple choice question!

Part 1: Using the instructions given here, complete the drawings below. (4 points)

- 1a. Draw a nucleus in those cells that have a nuclej.
- 1b. Shade with red those cells that contain hemoglobin.
- 1c. Circle the parts most important in blood clotting.
- 1d. Write the names of each on the blank below the drawing.



Part 2: Complete the chart below by writing the phrases in their correct places with the chart. The first one is done for you. (16 points)

RED BLOOD CELLS	WHITE BLOOD CELLS	PLATELETS
	8000 in small blood drop	

- |  |   |   |
|--|---|---|
| <ul style="list-style-type: none"> <li>○ 8000 in small drop of blood</li> <li>○ 250,000 in small blood drop</li> <li>○ 5 million in small blood drop</li> <li>○ Not whole cells</li> <li>○ Destroy bacteria</li> </ul> | <ul style="list-style-type: none"> <li>○ Aid in blood clotting</li> <li>○ Can move into tissues</li> <li>○ Increase during infections</li> <li>○ Transport oxygen</li> <li>○ Part of pus</li> <li>○ If number is low, person feels tired</li> </ul> | <ul style="list-style-type: none"> <li>○ Life span of 5-10 days</li> <li>○ Life span of 10 days</li> <li>○ Life span of 120 days</li> <li>○ Increase during leukemia</li> <li>○ Carries carbon dioxide</li> </ul> |
|--|---|---|