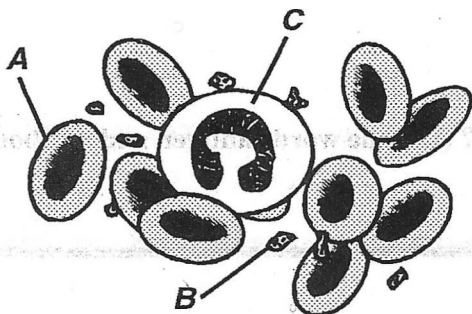


Name: _____

- 1) Which statement correctly describes the activities of the components of human blood shown in the diagram below?



- A) Both B and C provide immunity, and A transports nutrients.
- B) A transports oxygen, B initiates clots, and C functions in immune responses.
- C) Both A and B function in immune responses, and C transports oxygen.
- D) A, B, and C are able to synthesize hemoglobin.
- 2) What is a major difference between red blood cells and white blood cells?
- A) Red blood cells contain hemoglobin, white blood cells do not.
- B) Red blood cells engulf foreign bacteria, white blood cells do not.
- C) Red blood cells contain nuclei, white blood cells do not.
- D) Red blood cells can move, white blood cells cannot.

- 3) Which structures are responsible for blood clotting in humans?

- A) White blood cells
- B) Red blood cells
- C) Platelets
- D) Basophills

- 4) Many bacteria that enter the circulatory system are engulfed and destroyed by

- A) platelets.
- B) phagocytic red blood cells.
- C) plasma.
- D) phagocytic white blood cells.

- 5) Name *three* of the main functions of the circulatory system. (Blood and Blood Vessels)

1. _____

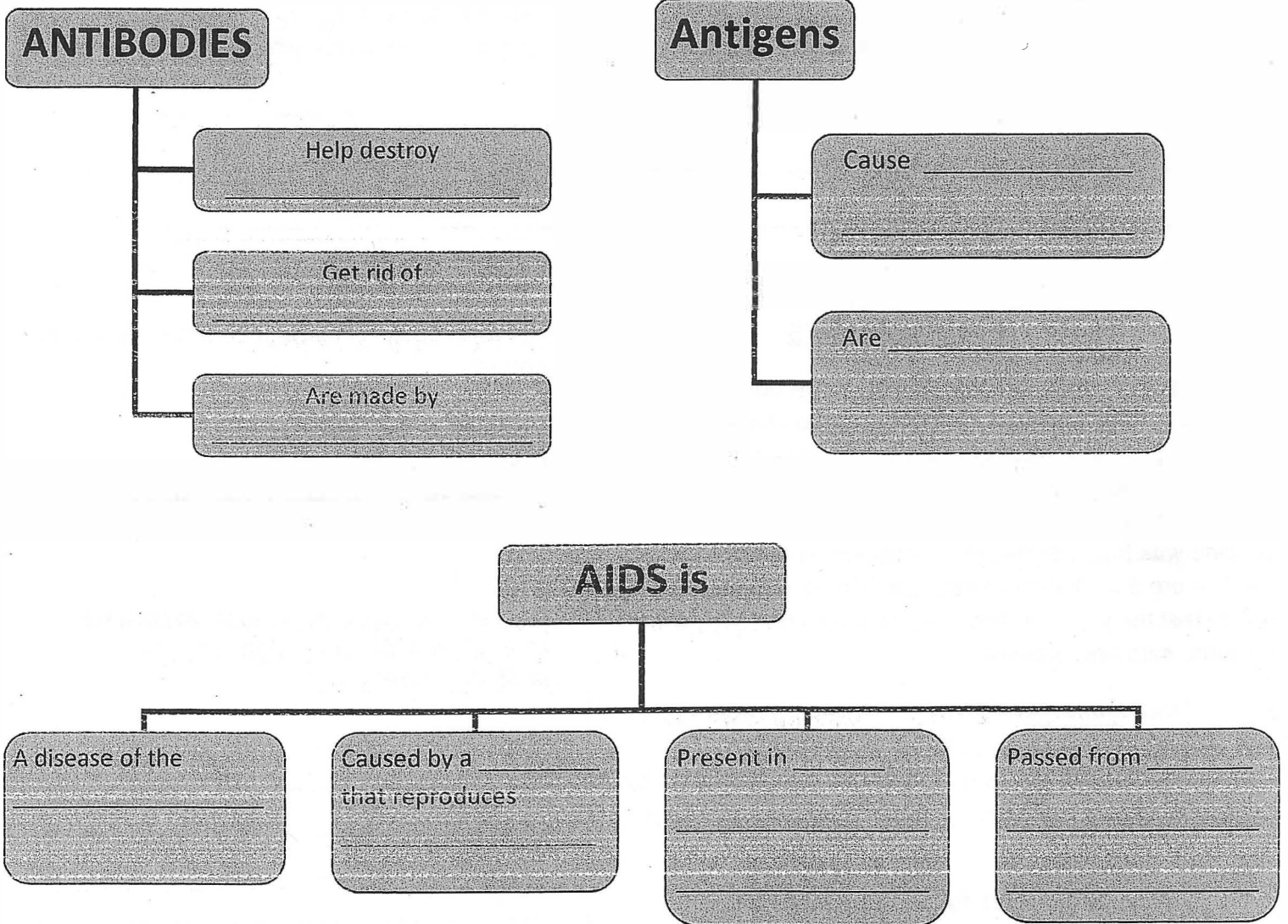
2. _____

3. _____

Homework 2.11 IMMUNITY

Part 1: Use the following words or phrases to complete the idea map:

- foreign substances that invade the body and cause disease
- an infected person to another person
- antigens that enter the body
- blood and body fluids
- antibodies to form
- bacteria and viruses
- immune system
- virus
- white blood cells
- within cells



Part 2: Explain how a bacterium is destroyed when the antigen and antibody fit together?
