

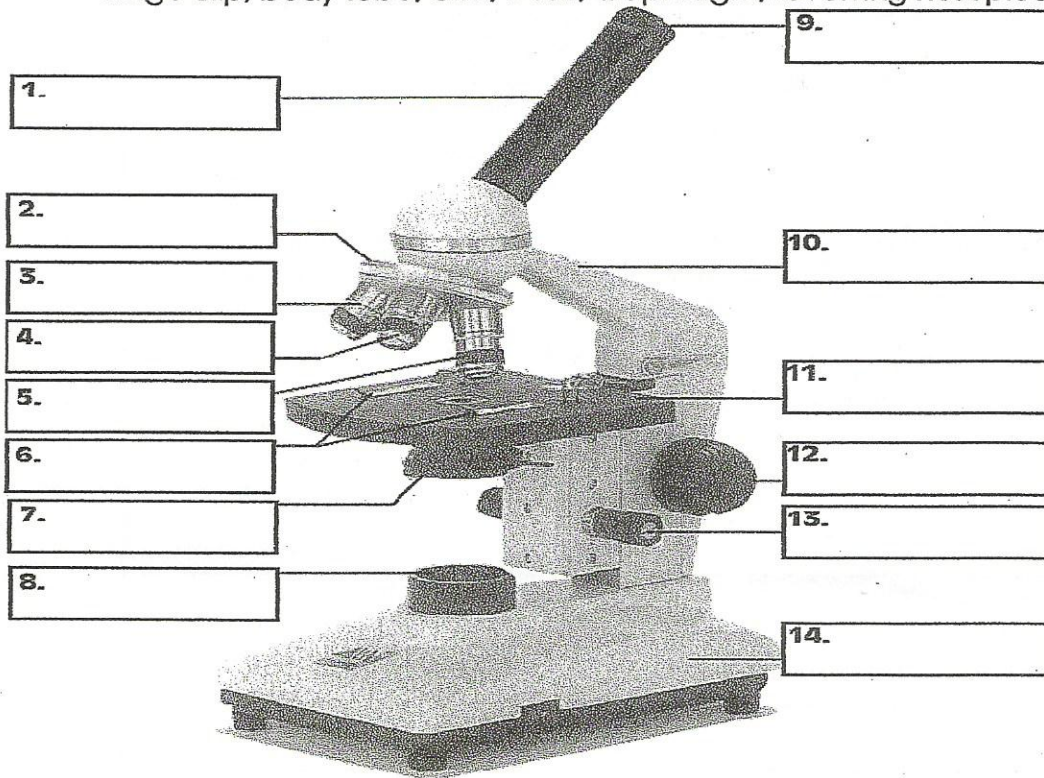
Name: _____

Date: _____

Living Environment Period _____

HW# TOOLS OF BIOLOGY

1. Directions: Label parts of the drawing using the words listed here: coarse adjustment, stage, light source, fine adjustment, eyepiece, low power objective lens, high power objective lens, medium power objective lens, stage clip, body tube, arm, base, diaphragm, revolving nosepiece.



2. The power of a lens tells how many times it will magnify. To find out how many times an object is magnified, multiply the eyepiece lens power by the objective lens power.

- a. Find the total low power magnification and the total high power magnification of the microscopes in the table below.

| Microscope | Lens Magnification | | | Total Magnification | |
|------------|--------------------|----------------|-----------------|---------------------|------------|
| | Eyepiece lens | Low power lens | High power lens | Low Power | High Power |
| A | 4x | 10x | 40x | | |
| B | 10x | 10x | 43x | | |
| C | 8x | 10x | 50x | | |

b. Which microscope (A, B, or C) gives the highest magnification on low power? _____

c. Which microscope (A, B, or C) gives the highest magnification on high power? _____